

ABHINAV GUPTA

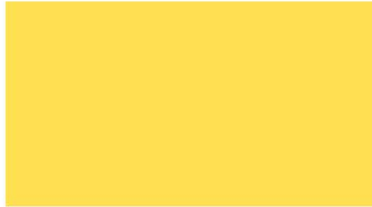


ARCHITECTS

architecture  
interiors  
consultancy

Mob : 7715 833 650

COMPANY  
PROFILE



101, Shree Ganesh Krupa Apartments, Near Vibgyor School, Sector 8A, Airoli, Navi Mumbai - 400708



[www.abhinavguptaarchitects.com](http://www.abhinavguptaarchitects.com)



[facebook/agamumbai/](https://facebook.com/agamumbai/)



[abhinavguptaarchitects@gmail.com](mailto:abhinavguptaarchitects@gmail.com)



[instagram/abhinavgupta.architects/](https://instagram.com/abhinavgupta.architects/)

**ABHINAV GUPTA ARCHITECTS** established in January 2014, is a professional, creative and dynamic Architectural & Interior Design firm based in Airoli, Navi Mumbai, with multifaceted approach and innovative design ideas.

Established in 2014, under a parent partnership firm namely Colossal Architects, executed a numerous project in various segments including consultancy in architecture and interiors , liasoning and accounting etc. AGA particularly deals in creative segment.

We are involved mainly in designing of various Residential & Commercial Projects, for which we provide architectural services, as well as co-ordination with various consultants & agencies such as structural, mechanical, landscape, fire fighting, tendering & any other related services required for the project.

We also provide innovative and productive interior design solutions with blend of modern and contemporary concepts with services ranging from carpentry, electrical, plumbing, plaster of paris, painting etc. We also undertake turnkey projects with high standard of workmanship with stringent budget.



**Ar. ABHINAV GUPTA**

*Chief Architect*

Bachelors in Architecture

*Mumbai University*

*Padmashree Dr. D.Y. Patil College of  
Architecture, Nerul, Navi Mumbai*

10 Years of Professional Practice

**COMPANY PROFILE**

## ARCHITECTURAL PROJECTS



Page No. : **03 - 14**

## HOSPITALITY INTERIORS PROJECTS



Page No. : **15 - 25**

## RESIDENTIAL INTERIORS PROJECTS



Page No. : **26 - 36**

## OFFICE INTERIORS PROJECTS



Page No. : **37 - 39**





*A second home/holiday home project set in nature at Kudal in Sindhudurg. A scheme of bungalows with traditional approach with multiple modules according to the needs of the clients. The project consists of 47 bungalows on an individual and twin sharing basis.*







*The complete Site is divided into sub-plots with every plots having a direct road access. Every plot has front garden and backyard for recreation.*

*The Design is very simplistic with contemporary approach with a touch of traditional features in aesthetics. Every bungalow is two tiered with terraces and parking spaces with separate entries for plots.*







*Siddhivinayak Villas; This contemporary bungalow scheme is a real retreat for an urban family from Mumbai.*

*The Site situated at Shahpur which is close to Mumbai and Thane city making it one of the closest weekend destinations from Mumbai.*

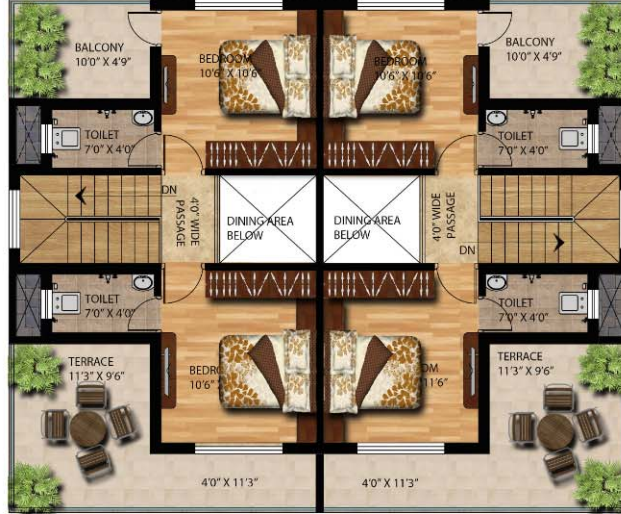




*The overall design of the house is more of an open plan concept with lesser areas to be locked up and closed when the family is not around, so the feel is more of a rustic, unique outdoor living space which is a breath of fresh air for people from the city. The units are designed with ample big spaces with double height living rooms and bedrooms with attached balconies and terraces.*











*The 40 x 50 ft plot is just beneath the Chittaurgarh fort.*

*The two sides of the plot boundary wall are shared with the adjacent neighbors plot or house which makes it quite a challenging situation to design and build. It also posed serious questions while designing in terms of allowing natural light & ventilation through the house*

**Bungalow for Mr. Abhishek Jadiya at Chittaurgarh, Rajasthan**

**ARCHITECTURE PROJECTS**



**ABHINAV GUPTA ARCHITECTS**



The conventional orientation of the house makes for an interlocking volumetric space within the house. A sense of connectivity is also established within the living room, drawing room, kitchen and the bedroom through the central double volume.







*Chaudhary Arcade is an architectural design project, proposed by Tulsaram Chaudhry in Bhinmal, Rajasthan. The Residential cum Shopping cum commercial project is approximately 3200 sq. ft at the junction of Bhinmal Char Rasta. The proposed complex has 5 Shops of which 3 are road facing and an office space at back side on ground floor. The First floor has a space for commercial banks with upper floors having residential units.*



*The client came to us to design the facade of the building for an office building in Hatnoli, Karjat .*

*The facade is enclosed by a grass curtain wall, however its artificial but adds to the aesthetics of the front dead facade. The triangular glass panels are designed in staggered pattern to control how much light enters the building.*







The Vitthal Kamat Restaurant is a dine-in outlet restaurant chain-PAN India. The common highway dine-in module was proposed to be designed keeping the company standards in mind. The Structure is Semi-open with front landscaping & parking; kitchen & utilities at backside; restaurant with open, semi-open and AC section in middle

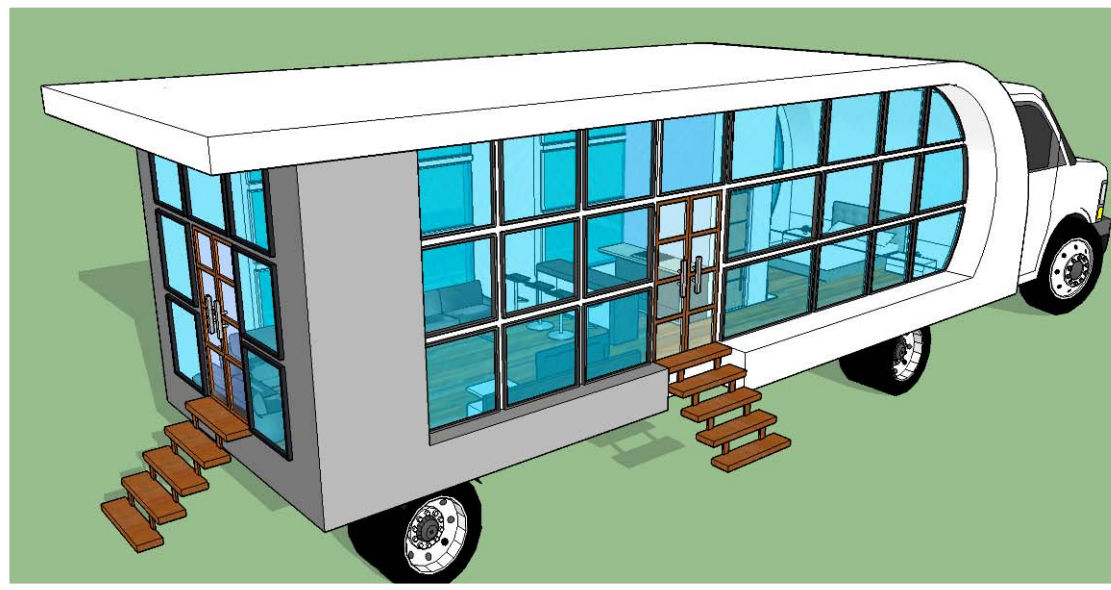


*This is the alternate option for Vitthal Kamat Restaurant dine-in outlet which is a bit premium side which is designed for urban and semi-urban outlets for restaurant chain-PAN India.*

*The Structure is Semi-open with front landscaping & dedicated parking; kitchen & utilities at backside; restaurant with open , semi-open and AC section in middle & children play area adjacent to the restaurant*

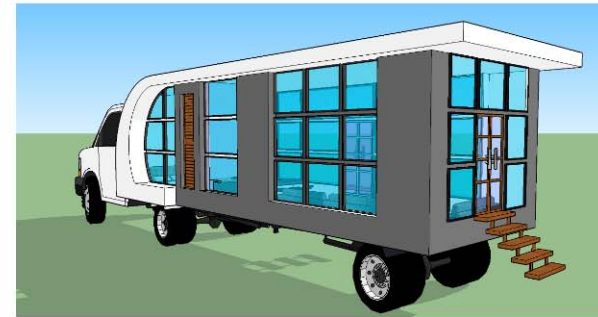
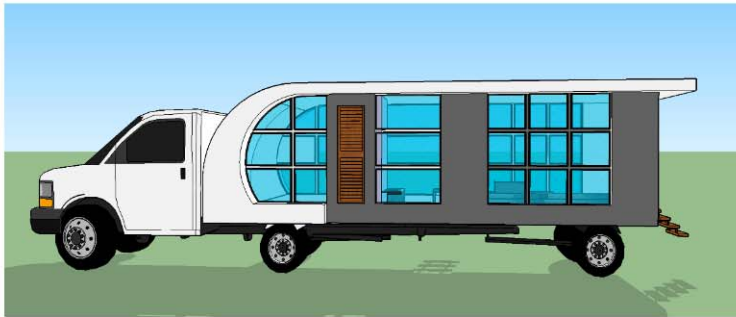
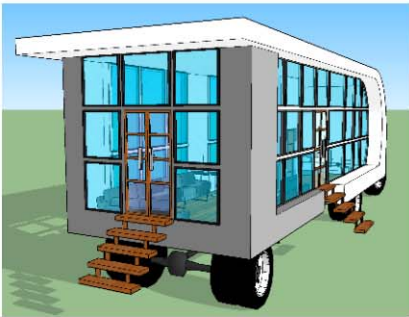






*The House on Trailer or Moving House is our flagship project designed for Legend Superstar Mr. Dharmendra Deol at Lonavala.*

*The Trailer is made up of fabrication with glass and composite panel. The interior planning consists of a Lounge area with pantry and toilet facility and also a small bedroom.*



**House on Trailer for Mr. Dharmendra Deol at Lonavala**

**ARCHITECTURE PROJECTS**

*This iconic, award winning restaurant beckons you to partake in a royal experience. Reviving the artfulness of courtly manner and presentation from across the country, The exquisite décor infused with deep sapphire blues and silver, reminisces a bygone era and evokes a sense of the old-world charm.*







*Cream Centre ; a veg bistro global cuisine restaurant is designed at Neptune mall, Bhandup. The idea of this restaurant is one of its kind and was conceptualized by our clients which made it very essential to focus on designing interior of the restaurant which is minimal in its approach.*





*Pepperfry Restaurant - A multi cuisine branch of Vitthal Kamat is proposed by the Kamat group to come up with PAN india module for its Premium multi-cuisine outlet. The design approach was to keep it extravagant with a socializing touch to it. A fusion design which mixes contemporary and rustic elements to the project.*







Pepperfry Restaurant – By Kamats at Eastern Express Highway -Thane

INTERIOR PROJECTS



*A franchise/branch of Vitthal Kamat Restaurant is designed for the Kamat group at Bhartana, Surat with premium look unlike their dine-out restaurants. A fine dine restaurant with rustic and varied design elements*





*A franchise/branch of Vitthal Kamat Restaurant at Dindoli, Surat with premium look. A fine dine restaurant with contemporary and exposed design elements*



The Vitthal Kamat Restaurant is a dine-out outlet restaurant chain- PAN India. The common highway dine-out Interior module was proposed to be designed keeping the company standards in mind. The design is very simple & appealing keeping in mind the budget factor. With minimalistic elements, maximum aesthetics is obtained.







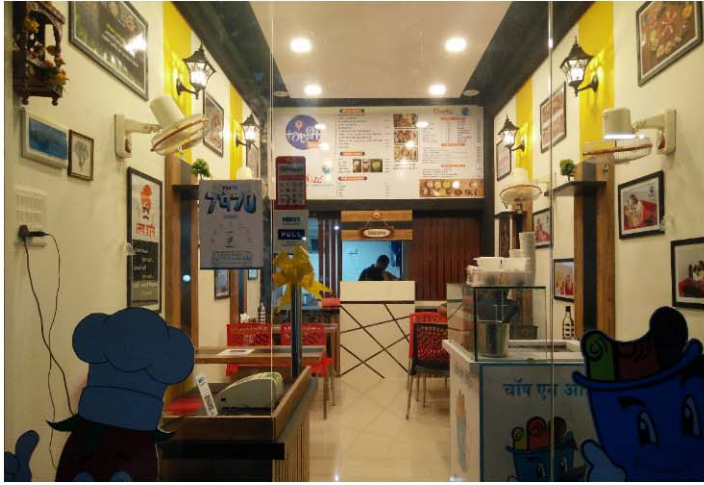
*A franchise/branch of Vitthal Kamat Restaurant is designed for the Kamat group at the very famous mall Road at Shimla. This is a Kiosk outlet unlike the regular Kamat Dine-in outlet with a area of almost less than 150sqft., which includes Kitchen, preparation area, cash and take away counter and also couple of seating. It was indeed a challenge for building such a outlet at such a high altitude with limited resources.*



A franchise/branch of Vitthal Kamat Restaurant is designed for the Kamat group at the Neptune Mall at Bhandup, Mumbai. This is a Dine-in cum Take away outlet with a area of almost 4000sqft., which includes Kitchen, preparation area, cash and take away counter and also couple of seating. This module is an addition to the previous Dine-in outlets as it consisted Snacks take away counter and a display section.

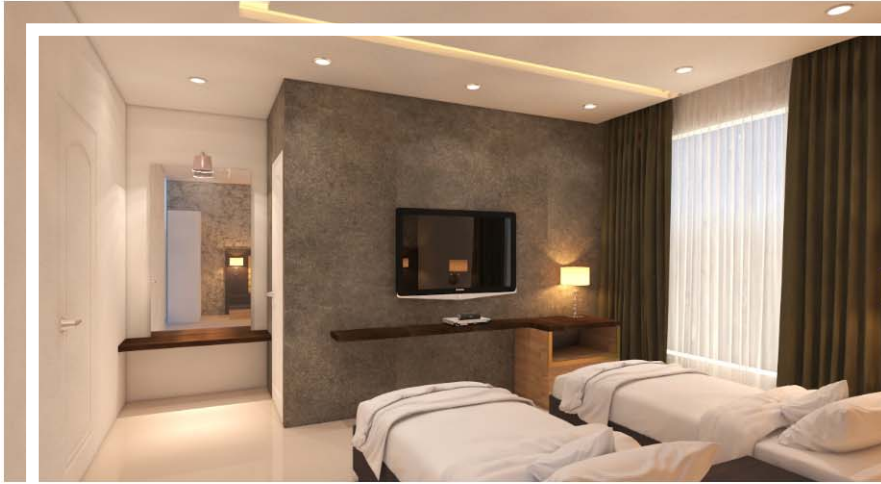




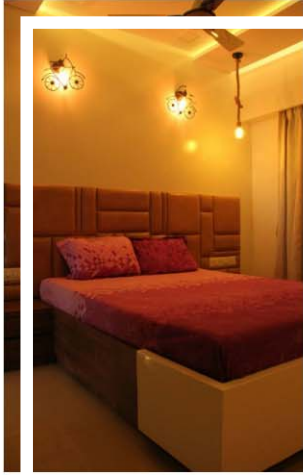


A Mauli Misal Restaurant at Airoli, Navi Mumbai is an authentic Maharastrian style Misal outlet with an area of 250sqft.

The outlet comprises of Kitchen, Preparation area, cash counter and 16 nos. of seating with tables designed as cantilevered from the wall.







*A lavish 3-BHK apartment of 900sqft at Lalbaug completed with complete design solution. The interiors are done in a simple yet elegant style, with quality materials and good workmanship being the priority. The Lights used to create ambience in various spaces enhances the feel of the project with different warm and cool lightings.*





*The House on Trailer or Moving House is our flagship project designed for Legend Superstar Mr. Dharmendra Deol at Lonavala.*

*The Trailer is made up of fabrication with glass and composite panel. The interior planning consists of a Lounge area with pantry and toilet facility and also a small bedroom. The whole concept is designed with wooden paneling.*



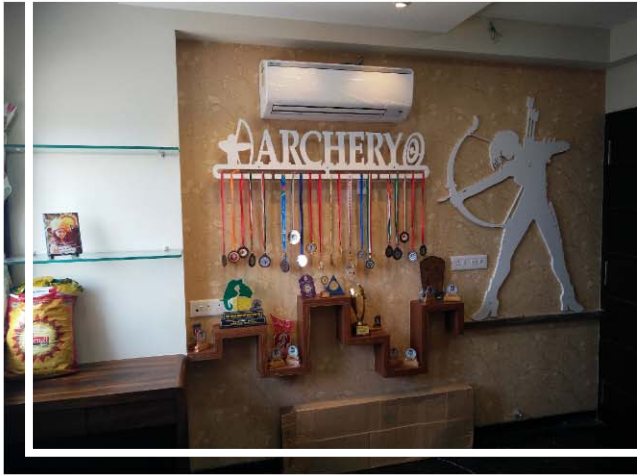
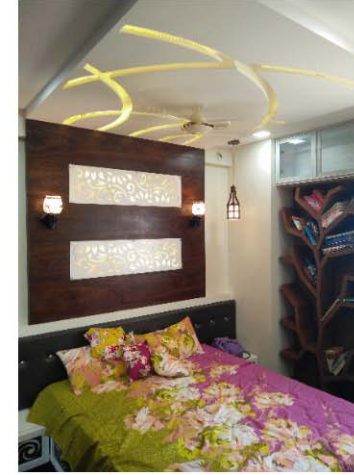
*Following the architectural design the firm also developed very minimalistic interiors to reflect the finest in luxury and finished with imported flooring and tiles, exotic wood & veneer, and fine fabrics.*

*The fabricated walls are panelled with leatherette and veneers for acoustics and considering cool climate of the site.*





A modern 3-BHK apartment of 980sqft at Katraj, Pune is completed with complete design solution. The interiors are done in a simple yet elegant style, with quality materials and good workmanship being the priority. The design pattern considered is geometric with certain elements as per the styles and moods of the end user







*A 3BHK duplex apartment with a minimalist, classy and functional design. The project has lots of interesting elements that are eye catching and unique to the space. The project revolves around a white base theme with splashes of colours unique to each rooms as per the requirements of the user.*





3 BHK Duplex Apartment for Ms. Neeta Bhoir at Uran, Raigad

INTERIOR PROJECTS





*This villa is a house for three generations of a family, an architectural studio and on occasion a space for cultural get together.*

*The house is organized in overlapping spaces categories split into three levels.*

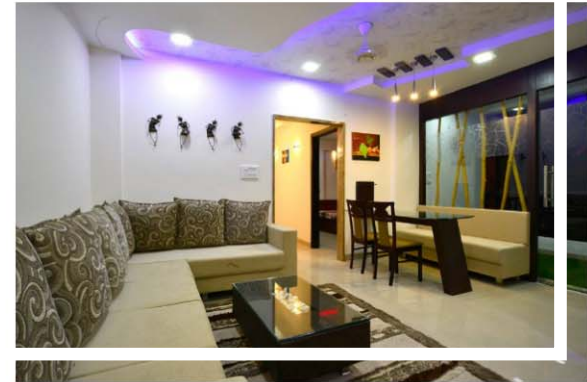
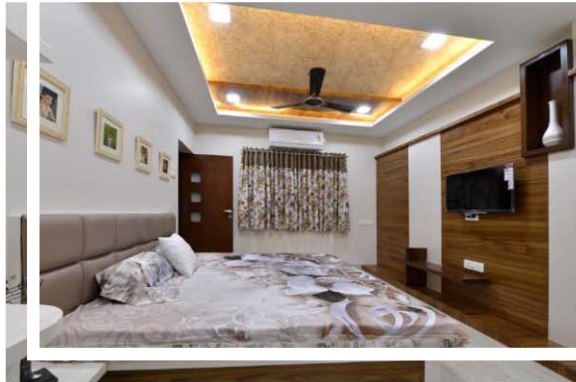


*The designing is done in crisp clear planes that are articulated in local materials, local hardwood and CNC Laser cutted Jaalis. The project is a confluence of the notions of nature, culture, family and modernity.*

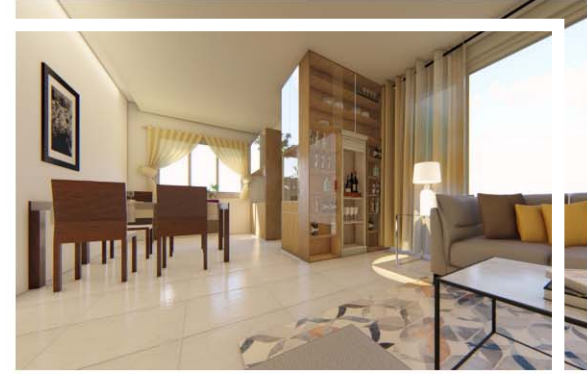
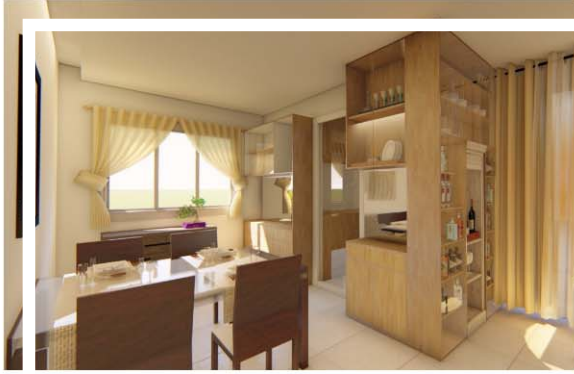




*A 3BHK apartment of 1150 sqft area at Wakad Pune; is a perfect example of blend of modernization and elegance. The project has a minimalistic design approach with very simple patterns and choice of furniture .*

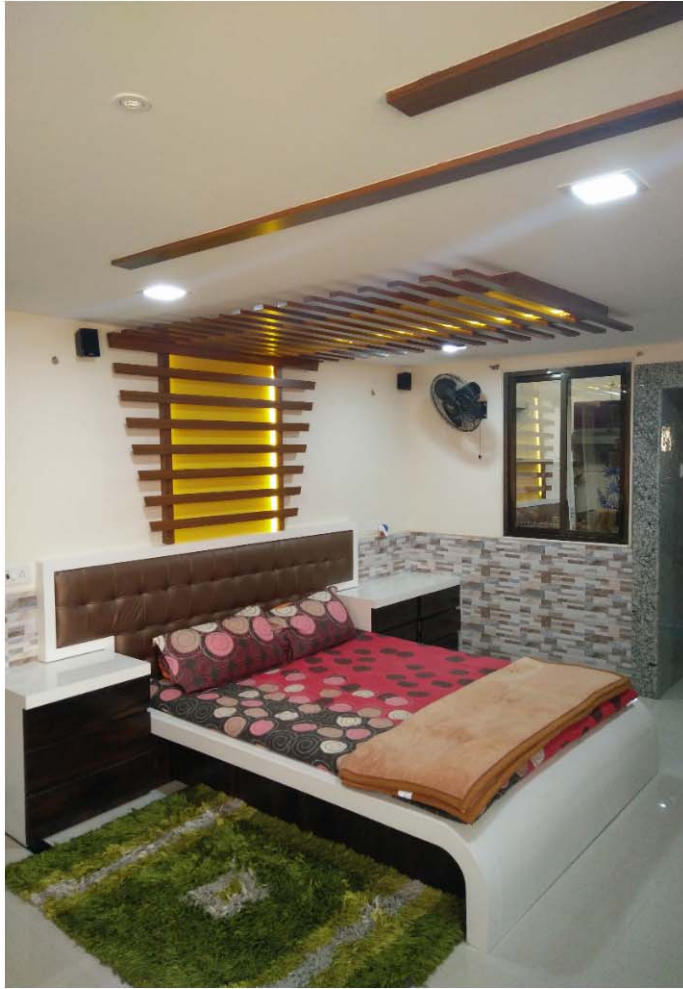






*A 2BHK terrace apartment at Andheri, Mumbai is designed for Mr. Vikram Kamat. The design incorporates a balance of aesthetics and refined luxury that reflects the client's lifestyle and defines the richness in furniture and innovative design which gives the project status a way beyond aesthetic.*

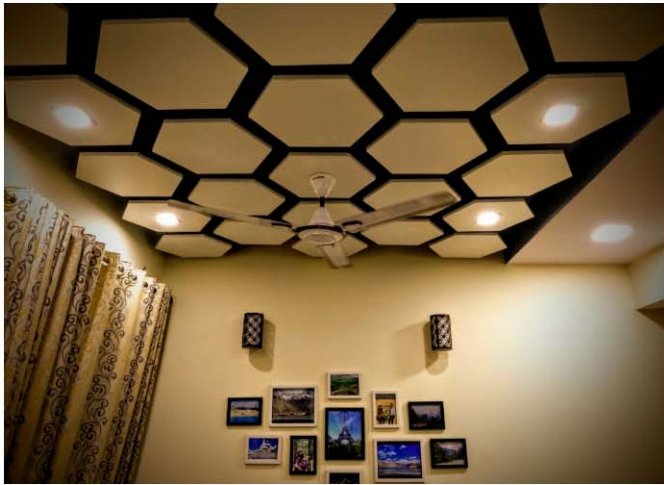
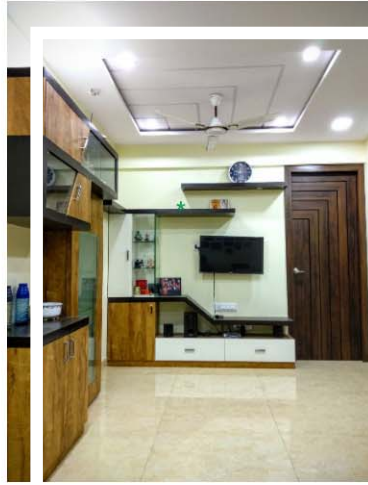




This 2BHK terrace apartment is designed with a theme of linear geometry with rafters protruding above the bed and climbing as creepers to the ceiling.





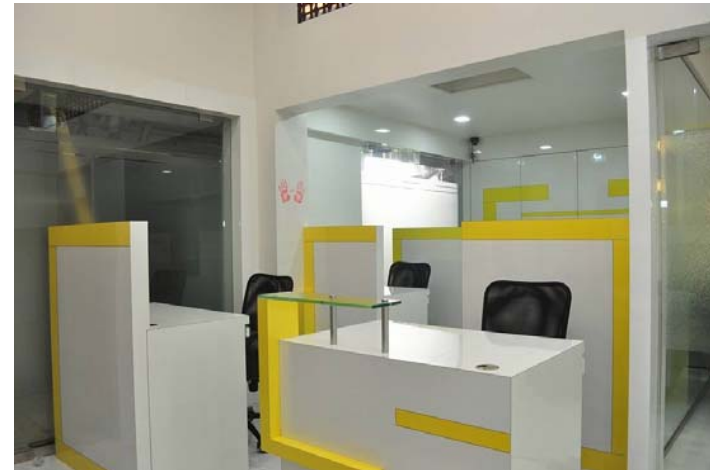


*This 2BHK apartment is designed for Mr. Basu at Shilphata having an area of 650sqft. The ceiling is designed with Hexagonal panels hanging from the slab with ambient light in the backdrop which adds to the mood lighting.*

*The Criss-Cross geometry concept is used in designing the Bedroom which reflects in ceiling, Headboard & Wardrobe*



*Dominated by slashes of Yellow on the predominant base of white, the interiors of Mr. Dalvi office is an aesthetical appealing theme to enhance the working environment. The theme was decided considering the International clientele in mind as the company caters to logistics internationally.*

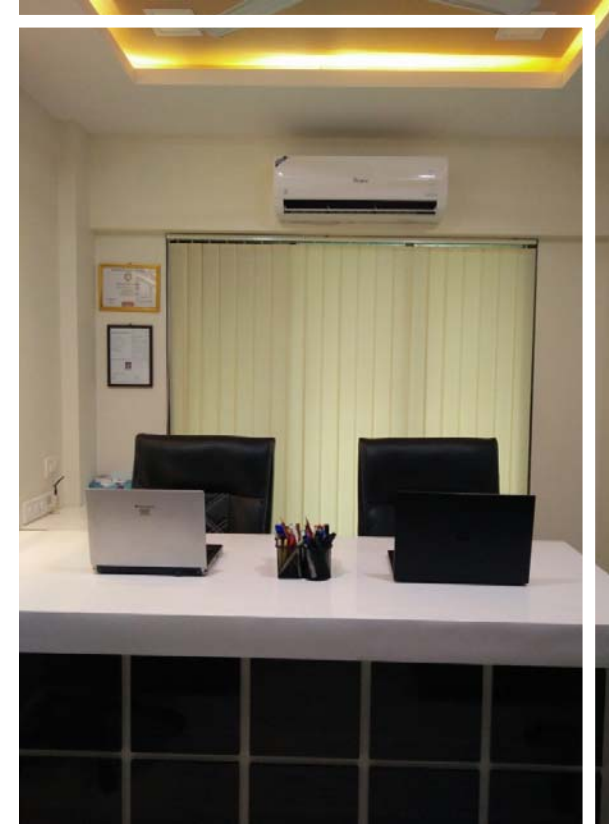






*The Idea Cellular Corporate office needed a very dynamic design approach to create a vibrant environment for Elite work force & to accommodate max seating possible. The furniture was sourced entirely from China. The assembly part along with flooring and ceiling with paneling was executed on site.*





*Our parent company; Colossal Architects was designed by ourselves at Airoli, Navi Mumbai which consisted of a partners cabin, washrooms, pantry and workstations for 8-10 staff. A simple & minimalistic design approach.*



ABHINAV GUPTA



ARCHITECTS

architecture  
interiors  
consultancy

Mob : 7715 833 650

**COMPANY  
PROFILE**

**THANK YOU**

101, Shree Ganesh Krupa Apartments, Near Vibgyor School, Sector 8A, Airoli, Navi Mumbai - 400708



[www.abhinavguptaarchitects.com](http://www.abhinavguptaarchitects.com)



[facebook/agamumbai/](https://facebook.com/agamumbai/)



[abhinavguptaarchitects@gmail.com](mailto:abhinavguptaarchitects@gmail.com)



[instagram/abhinavgupta.architects/](https://instagram.com/abhinavgupta.architects/)